



The Rockhounder

July-August 2022

The purpose of the Gem, Lapidary, and Mineral Society of Montgomery County MD, Inc. is "to increase knowledge and popular interest in earth sciences, geology, mineralogy, paleontology, lapidary arts, and related subjects."

NOTE: Please send any submissions for the September issue of The Rockhounder to Editor Olivia Luzier at editor@glmsmc.com by August 31st, 2022.

Regular Meeting Announcements

Pat Repik-Byrne, Vice President

July-August Speaker Information

There will be no speaker or meeting over the summer. The speaker information for September will be posted in the next issue of the Rockhounder.

President's Message

Jonathan Harris

Hello fellow club members,

Hopefully, you are enjoying the summer recess. If you haven't already, mark your calendars for our September 25 picnic and auction. We will be auctioning pieces from a mineral collection with specimens that were collected over 50 years ago. Many of the locations are closed or depleted.

We will have an active fall, as Pat has been lining up speakers. In addition, we have received a sizable donation of lapidary material and equipment. We will auction selections from it during our meetings.

Continued on page 2

Next Regular Meeting:

Date: September 12, 2022

Time: 7:30 PM

Place:

Rockville Senior Center,
1150 Carnation Drive Rockville MD

Next Board of Directors Meeting:

Date: September 19, 2022

Time: 8 PM

Place:

Virtual (online Zoom meeting)

Inside this issue:

| Item | Page |
|--|------|
| Meeting Announcements, Speaker Info, President's Message | 1 |
| Regular Meeting Minutes | 2 |
| BOD Meeting Minutes | 4 |
| Message from Membership Chair, FRA Meeting Minutes | 7 |
| Mt. Pleasant Mills Trip Pictures | 8 |
| FMVA Book Announcement | 9 |
| A Visit to Maine Mineral Museum | 11 |
| September Picnic & Auction | 12 |
| Upcoming Shows | 13 |



President's Message

Jonathan Harris

Continued from page 1

We also will be planning additional public auctions of some material we will auction on behalf of collectors with whom we will split the proceeds. Thanks to those who have helped in gathering and storing the material and planning the upcoming auctions.

I believe our auctions of material and equipment provide a valuable service to our collecting community. Besides funding our club, the specimens and equipment help spread the good virus of interest in earth sciences and lapidary arts. Many youths will have their first exposure to rocks and minerals through a teacher's or family friend's collection, a presentation at Scouts, or similar groups. I caught the collecting virus from my third-grade teacher's collection. Without clubs such as ours, much material and equipment would end up being discarded and lost forever.

Cheers and keep cool,

----Jonathan

GLMSMC Regular Meeting Minutes from June 13, 2022

Secretary Patricia Cronin

The meeting commenced at 8:45 PM, with 40+ persons in attendance. Minutes of the last club meeting and Board of Directors meeting were approved.

Membership

A new member, Damien, was accepted into the club.

Guests included a family who had attended our show in March. Their children are very interested in our kids' programs.

2023 Show

The contract with the county fairgrounds for our 2023 show has been signed.

Other Club News

The club picnic and auction will be held Sunday, September 25.

A collection of cracked geodes, donated by John Polk, was auctioned at the club. Several of them fluoresced and all were filled with crystals.

Continued on page 3



GLMSC Regular Meeting Minutes from June 13, 2022

Secretary Patricia Cronin

Continued from page 2

The speaker was Jennifer Weiss, formerly one of our Junior Rockhounters, who is now a Geoscience student at JMU. She is particularly interested in the intersection between Geology and Art History. A member of GLMSC since 2009, Jennifer earned numerous badges, as well as winning several awards for her show displays during her time in the program. Our MOCKS kids moved to the adult part of the meeting to hear her presentation and see how a childhood interest can develop into a career path.

During her internship at the JHU Mineral Museum, Jennifer participated in preparing the museum for its grand re-opening in October of 2021. She showed slides of some of her favorite of the museum's specimens. She showed other slides of thin sections under various light and slides of some of her class field trips.

Because of COVID, much of her college experience so far has been via Zoom, including field trips. The isolation enabled her to concentrate intensively on her studies, leading her to complete her double major in 3 years instead of the usual 4. Jennifer especially enjoyed working as a teaching assistant and participating in an Arizona field camp. She noted that the topography in the western states is very different from what she was accustomed to in the east. The numerous Petroglyphs she saw played into her interests in both art and geology.

Her capstone research involved developing a student field trip along Corridor H in WV, studying its structural concepts. This 2-day field trip is designed to teach students how to collect and use data – collecting it in the field, along with studying and analyzing it in the classroom. This integrated lab and field learning. She developed lesson plans and exercises to collect and measure stereonet. These are used to find out how the folds run.

For the art portion of her presentation, she showed slides of cave art and other art. Jennifer commented that art and geology are not completely separate disciplines. Art analysis is based on geology analysis in the comparisons of how artists draw specific details in their pictures. The facets of a crystal are similar to the various facets and features of artwork, art, and culture. Scientists use artwork to describe science and scientific terminology to describe art.

She will continue to show the intersections in jewelry, paintings, and art with geology as she pursues her Master's Degree. She wants to show that the connection is everywhere.

Jennifer presented as a poised and professional speaker with a very interesting topic. Club members who have watched her talent and enthusiasm over the years are very impressed and proud of her.



GLMSMC BOD Meeting Minutes from June 20, 2022

Secretary Patricia Cronin, with minutes recorded by Dan Kohn for the month

The Board meeting was called to order at 7:30 PM via Zoom.

Board members present: Jonathan Harris, Gary & Diane Leaman, David Tiktinsky, Karen Lottes, Patricia Repik-Byrne, Chris Luzier, Dan Kohn.

September Picnic & Auction

The pavilion at Griffith Park, Gaithersburg, has been booked for September 25. In order to avoid conflict with the Rosh Hashanah holiday, the meeting will end no later than 3:30. This picnic will be a potluck meeting. The club will provide bottled water, ice, plates, napkins, and eating utensils. Serving utensils appropriate for the items being brought to the picnic should be provided by the person(s) bringing the item.

The Bednar family's donation of minerals will be auctioned off. These items are stored in several Board members' basements, and three to four board members will get together in July and August to break most of this material down into auction lots and make auction slips. Donations of small cardboard boxes/flats, Ziploc sandwich bags, and thin blade screwdrivers will be needed to prepare the auction lots.

Any remaining Wendell Mohr materials will be auctioned off in a separate members-only auctions at club meetings that are not yet scheduled. Future auctions of this material will be announced in the Rockhounder ahead of time.

A request will be made in the Rockhounder for club members to bring small cardboard boxes and Ziploc bags to the September general meeting for final packaging of the auction lots. Also during the September meeting, members will be polled to determine whether they are likely to attend the September picnic/auction event on September 25.

One additional option being investigated is whether Sign-up Genius should be used to determine the number of likely attendees and what they might bring to the pot luck meal. Sign-up Genius requests would start to be issued in August, and the event will also be profiled in this summer's Rockhounder. The categories for food items to be brought are Appetizer, Entrée, Side, and Dessert.

Proposed timeline for the event:

8:30 AM– Setup of the auction lots to begin

11:00 AM– Viewing of the auction lots would start

11:30 AM– Food available for everyone

12:15 PM– Auction begins

Chris agreed to write-up the announcement for the picnic/auction event. The name of the event will be "Members & Family Autumn Picnic and Auction."

Continued on page 5



GLMSMC BOD Meeting Minutes from June 20, 2022

Secretary Patricia Cronin, with minutes recorded by Dan Kohn for the month

Continued from page 4

The proceeds from the auction will benefit the club.

Communications

The number of people following the club's Facebook page increased from 310 to 360. There were many page views of the Serpentine write-up, and of the monthly door prizes. Agates received 260 views. The number of unique visitors per month has increased from approximately 600-700 per month to over 1,000 per month.

Possible communication channels to be investigated in the future include the following:

- Google Re-direct or Direct
- Montgomery County
- Cable TV
- Buses
- Next Door
- Craig's List
- Patch
- Reach out to other GLMS clubs
- Reach out to home schooling groups
- Boy/Girl scout troops
- Area PTAs

In advance of future club shows, better advertise the activities available which would likely include:

- Gold Panning
- Natural History Displays
- Fluorescent Display
- Demonstrations
- Lapidary Shop

Administrative:

- Doug and Jonathan need to finalize the updates to the online New Member application
- Doug will reach out to lapsed club members
- All club items available for auctions have been auctioned off.

Continued on page 6



GLMSMC BOD Meeting Minutes from June 20, 2022

Secretary Patricia Cronin, with minutes recorded by Dan Kohn for the month

Continued from page 5

Administrative:

- The identification of the remaining specimens donated by Chuck Hyland's estate to the Rockville Science Center has been completed
- If anyone is interested in being added to the Rockville Science Center listserv, which will send you e-mail notifications regarding their upcoming exhibitions and special events, please reach out to Chris Luzier

Field Trips

On Sunday, June 26, Chris and Mark took the FRA on a field trip to Flag Pond at Calvert Cliffs.

Treasurer

Diane gave a report on our current assets. We are in good financial shape.

Program

June is our last general meeting until September.

Meeting adjourned at 8:53 PM.

Follow us on Facebook at
[https://www.facebook.com/
groups/984241208329511/](https://www.facebook.com/groups/984241208329511/)



A Message from Our Membership Chair

Doug Baum

I still have club pins for the following members. Please pick them up at one of our meetings.

Club pins for: Jennifer Bishop, Andrew & Peter Notarian, Bill & Cheryl McGowan, Julie & Sabrina Miller, Emily & Dave Johnson, Sho Yano, Dan Bailey, David Balenson, Ana Mansour, Bill Porter, John Polk, Ronald Mesnard.

Email me with questions to dbaum18@aol.com.

Doug Baum,
Membership Chair GLSMC

Future Rockhounds of America (The MOCKS) Ages 9-16

Mark Dahlman

Next Meeting Date: September 12th **Meeting Time:** 7:45-9:00 PM

Meeting Location: Sunroom Cafeteria at the Rockville Senior Center

June 13th Meeting:

After a short FRA meeting, we joined the general GLSMC meeting to listen to Jennifer Weiss' excellent presentation about her geology and art studies at James Madison University. Jennifer was a long-time member of the FRA and is soon off to Arizona to earn an advanced degree in the geosciences! Her undergraduate activities, including helping to set up JMU's new mineral museum and developing course material for the JMU geology program, is impressive, inspiring, and enviable. Congratulations and thanks to Jennifer!

June 26th Field Trip:

The FRA went on a fossil collecting field trip to Calvert Cliffs on a sunny Sunday afternoon. We ran into a snag though when our intended collecting site, Flag Ponds Nature Park, was at capacity and wasn't letting any more cars through the gate. Quick thinking by Chris Luzier rerouted the group down to the Calvert Marine Museum, where we admired their excellent displays of fossils, local historical artifacts, and live examples of the creatures that live in the bay. By the time we had toured the museum, Flag Ponds reopened their gate, so the group was able to go to the beach to collect fossils. Everyone found great examples (including sharks' teeth of course) to add to their collections. Thanks again to Chris Luzier for leading the expedition and sharing his expertise with us!

For more information on the Future Rockhounds of America program, please contact Mark Dahlman at [<fra_advisor@glsmc.com>](mailto:fra_advisor@glsmc.com) or 301-428-0455.



Pictures from August 6th Field Trip to Mount Pleasant Mills

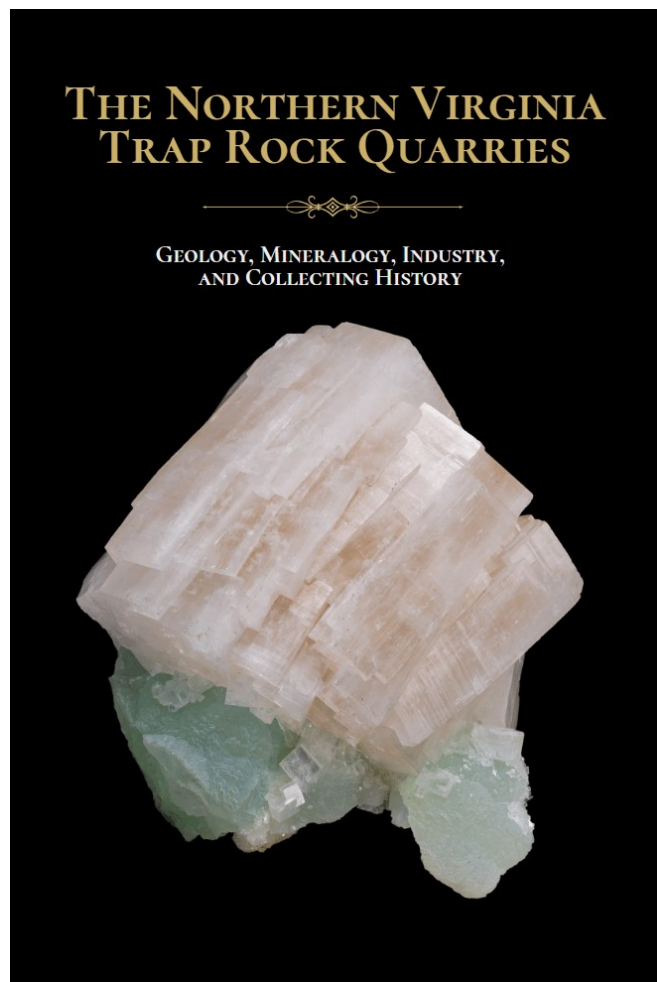
Photos courtesy of Sam Linton





The Northern Virginia Trap Rock Book Announcement

Editor's Note: This text has been edited from the Virginia Mineral Project's Zoom announcement for the publication of the book.



The Friends of Mineralogy Virginia Chapter Inc. have recently released their first book publication about the Northern Virginia Trap Rock Quarries!

“Book Description: Virginia has a rich mineral heritage. The Northern Virginia trap rock quarries were a source of world-class apophyllite, prehnite, and stilbite specimens which still rival the newer trap rock deposits in India. The quarries are also the source of a long list of high-quality miniature and micromount mineral specimens, including two type-locality minerals, goosecreekite and loudounite, first discovered and identified in Virginia.

In addition to its rich mineral diversity, hosting 87 different mineral species, the Northern Virginia trap rock quarries are critical to the economy of Virginia. These few trap rock quarries have provided aggregate materials supporting Northern Virginia's transportation and construction sector for decades. This publication combines a detailed review of the region's mineralogical and geological heritage, including a deep dive into the aggregate industry and its importance in society. Through this industry and mineralogy approach, the publication will be

immensely useful for teachers, tourists, collectors, and nature enthusiasts wanting to learn more about Virginia's mineralogical history. Biographies of some of the most important people involved in mineral collecting in the trap rock quarries and Virginia's mineral history are presented along with many of their collecting stories, which are published here for the first time.”

-Virginia Mineral Project, Friends of Mineralogy Virginia Chapter, Inc.

If you would like to order a copy, please email FMVA's new publication order email at: fmvapublications@gmail.com

Please see the next page for more pictures from the book!

Continued on page 10



The Northern Virginia Trap Rock Book Announcement

Continued from page 9



Photos courtesy of Virginia Mineral Project, Friends of Mineralogy Virginia Chapter, Inc., with information submitted by Chris Luzier





A Visit to the Maine Mineral and Gem Museum

Holly Heighes

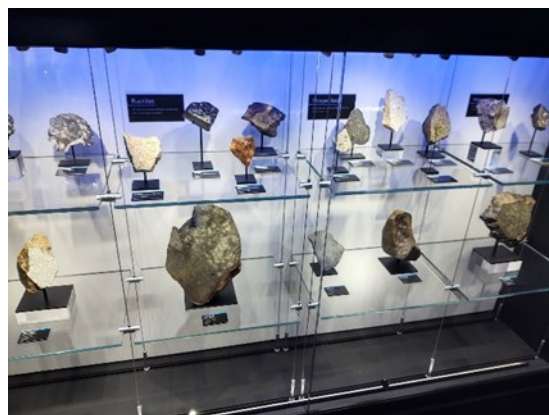
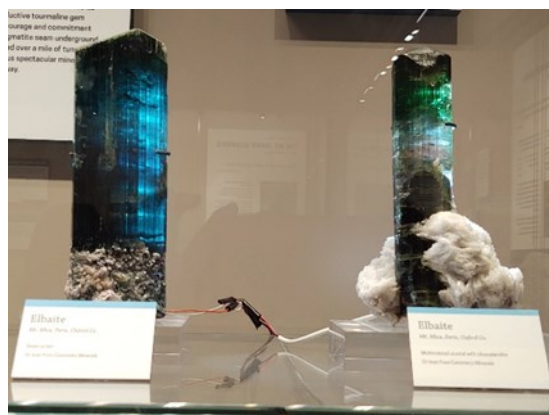


If you are interest in tourmaline, meteorites, or Maine mining....

This small museum, which opened in 2019, punches well above its weight in terms of the quality of its collections. I was impressed with the level of detail in the exhibits, particularly the firsthand accounts and history of specific finds.

The meteorite exhibit was impressive; they boast the largest pieces of Mars (14.51kg) and Vestra (71.7kg) found on Earth, as well as many other historical meteorites.

Education is at the forefront, with exhibits on the commercial applications of Maine minerals, mining, and geology. Their boulder garden surrounding the museum was fun, informative, and impressive.



See more at: <https://mainemineralmuseum.org/>

Location:

99 Main Street, Bethel Maine

1.5 hours from Portland ME airport

2.75 hours from Manchester NH airport

The museum is near some of the best natural scenery and recreation in New England.



September Picnic and Auction

GLMSMC MEMBERS
& FAMILY
POTLUCK PICNIC
AND AUCTION

PLEASE BRING AN
ENTRÉE,
APPETIZER, SIDE OR
DESSERT TO SHARE
(OR MORE THAN
ONE)!

SUNDAY
SEPTEMBER 25, 2022
11 AM- 3:30 PM

Griffith Park Pavilion,
29 South Summit Avenue
Gaithersburg, MD.

11:00 am- Auction Viewing
11:30 am- Food Commences
12:00-12:15- Auction Begins

Bednar Family
Mineral Collection
Auction will be for
club members and
family, via silent &
live auction

Please bring serving
utensils with
potluck dishes that
require them!



Upcoming Shows

5th Annual South Jersey Gem, Jewelry, Mineral & Fossil Show

Date: October 8 - 9, 2022

Location: 1721 Springdale Road Cherry Hill, NJ 08054

Show Times: Saturday (10/8/22) 10:00 am - 6:00 pm & Sunday
(10/9/22) 10:00am - 4:00pm

Website: www.sjmineralshow.com

Facebook: www.facebook.com/sjmineralshow

Central Pennsylvania Rock and Mineral Club's 56th Annual Gem, Mineral and Jewelry Show

Date: September 24-25, 2022

Show Times: Saturday 10:00 -6:00 and

Sunday 10:00 – 4:00 pm

<https://rockandmineral.org/annual-show/>

2701 N. 3rd Street (next to Harrisburg Zembo)

Harrisburg, PA 17110



Upcoming Shows

Continued from page 13

Central PA Rock and Mineral Club's 56th Annual

GEM MINERAL & JEWELRY SHOW

September 24 and 25, 2022
Sat. 10 am-6 pm Sun. 10 am-4pm

Harrisburg Consistory
2701 North Third Street, Harrisburg, PA
Uptown Harrisburg, Next to Zembo
(FREE Off-street Parking!)

Admission \$5/Per Person*
*With this Postcard or Ad
Valid for up to 4 Admissions
Children 12 & Under FREE
with Paying Adult
(Regular Admission \$6/Per Person)

FRANKLIN MINERAL SHOW

Indoor Show and Outdoor Swap

Sept. 17 & 18, 2022 | Saturday 9am-5pm & Sunday 10am-4pm

Franklin Fire Department, 137 Buckwheat Rd, Franklin, NJ 07416

Continued on page 15



Upcoming Shows

Continued from page 14

Tuscarora Lapidary Society Presents

GEMARAMA 2022

One of the largest Fine Gem, Jewelry and Mineral Shows on the East Coast
November 5th: 10 a.m. - 6 p.m. November 6th: 10 a.m. - 5 p.m.
Our 53rd Year Theme: A Rainbow of Possibilities

HALL D, Greater Philadelphia EXPO Center
100 Station Avenue, Oaks, PA 19456


One coupon good for discounts for your entire family!

Donation – \$6 • **With this coupon – \$5** • Two-Day Ticket – \$9 • Children under 12 yrs. – \$1
To receive our emails for discount coupons, show, course, and workshop information, please enter
your email address: _____

This coupon may be duplicated.

- Demonstrations
- Exhibits
- Dealers
- Free Parking
- Food
- Children's Activities
- Gems • Jewelry
- Beads
- Fossils • Minerals
- Findings & More!

For information or to purchase tickets:
www.lapidary.org/gemarama



Mineral Treasures Outdoor Show 2022

Sponsored by the Philadelphia Mineralogical Society

St. Michael's Grove
400 Jacobs St.
Mont Clare, PA 19453

Minerals, Fossils and Gem sales on
Grounds and in Pavilion

Kids' Activities and Free
Specimens

Snack Bar and Picnic Grounds

Saturday, Oct 8
10am to 6 pm

Free Parking and Indoor
Restrooms

Admission: \$5 per adult
Under 13 free
Scouts in uniform free

www.phillyrocks.org

Continued on page 16



Upcoming Shows

Continued from page 15

Franklin, NJ Gem and Mineral Show

Date: Sept. 16th & 17th

Location: Fireman's Park, Franklin, NJ

<https://franklinmineralmuseum.com/gem-mineral-show/>

Atlantic Coast Gem & Mineral Expo

Date: Sept. 24th & 25th

Location: Howard County Fairgrounds

Show Times: Saturday, September 24th 2022.. 10 am – 6 pm and
Sunday, September 25th 2022 10 am – 5 pm

Quality Dealers from all over the US.

Jewelry, Gemstones, Minerals

<https://howardcountyfairmd.com/event-calendar/>

Shenandoah Mineral Society Show

Date: Sept. 15, 16 & 17th

Location: Augusta Expo Center, Fishersville, Virginia

Continued on page 17



Upcoming Shows

Continued from page 16

SOUTHERN MARYLAND ROCK, MINERAL, AND FOSSIL SHOW SATURDAY NOVEMBER 5, 2022

9 am to 4 pm

OLD WALDORF SCHOOL

3074 CRAIN HIGHWAY (Rt 301), WALDORF MD 20601

(next to JayCees Hall)

**ADMISSION DONATION: ADULTS \$5.00, SENIORS (65+) \$4.00,
JUNIORS (17-7) \$3.00, UNDER 7 FREE**

THE HOLIDAYS ARE COMINGSTOP BY, WE HAVE LOTS OF
🎁 UNIQUE GIFTS 🎁**

**FREE PARKING * DOOR PRIZES * OVER 45 TABLES
*ROCKS *CRYSTALS *FOSSILS *HANDCRAFTED JEWELRY
*LAPIDARY *MINERALS *FLUORESCENT TENT *DISPLAYS**



SPONSORED BY SOUTHERN MARYLAND
ROCK AND MINERAL CLUB
WEBSITE: WWW.SMRMC.ORG

**FOLLOW US ON FACEBOOK: Southern Maryland
Rock and Mineral Club**

VENDOR APPLICATIONS OR QUESTIONS? CONTACT DAVE LINES THRU WEBSITE: SMRMC.org



BOARD OF DIRECTORS

President – Jonathan Harris

Vice President – Pat Repik-Byrne

Secretary – Patricia Cronin

Treasurer – Diane Leaman

Membership Chairman – Doug Baum

Downstairs Showchair – Chris Luzier

Upstairs Showchair – Dave Tiktinsky

Property Manager – Joel Rosen

EFMLS Liaison – Andy Celmer

At Large Board Members – Ken Reynolds, Karen Lottes, Gary Leaman, Dan Kohn

NON-BOARD POSITIONS

Field Trip Chairman – Sam Linton

Immediate Past President – Holly Heighes

Bulletin Editor – Olivia Luzier

Life Members: Larry Harrison, Juan Proaño, and George Durland

Society Address: Gem, Lapidary, and Mineral Society of Montgomery County MD., Inc.

P. O. Box 444, Gaithersburg MD 20884-0444

Website: <http://www.glmsmc.com/>

All Society correspondence is to be sent to this address except that which is intended for *The Rockhounder* and its editor. Such items are to be sent to the editor's email address at

editor@glmsmc.com.

Permission to copy material
printed herein, except
specifically copyrighted items,
is granted, provided credit is
given.

Award Winning Bulletin

EFMLS, AFMS



**TIME SENSITIVE
DATED MATERIAL
FIRST CLASS MAIL**

**The Rockhounder
Gem, Lapidary, and Mineral Society
of Montgomery County, MD, Inc.
P. O. Box 444, Gaithersburg MD
20884-0444**